



# M.A.C. Team

## About the M.A.C. Team



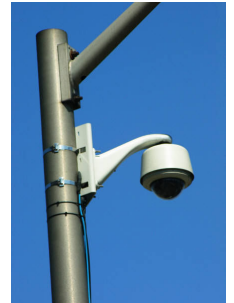
Designed to excel at moves, adds, and changes, the “M.A.C.” Team was launched in 2010 to meet the diverse needs of US Communications and Electric’s clients. Since this launch, the MAC Team has successfully completed jobs in industries ranging from healthcare to government to corporate settings. Additionally, US Communications regularly provides specialized services, including, but not limited to:

- Communication wiring for a Vice Presidential debate
- Wind turbine fiber optic cabling
- Complete wiring for healthcare institutions
- Video cabling for retail banking

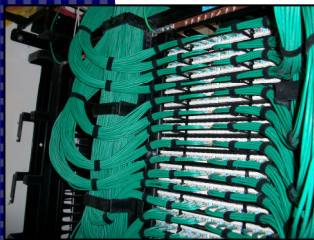
## M.A.C. Team Capabilities

Certified to install and service all major telecommunications equipment and supplies, hiring the US Communications M.A.C. Team ensures that the work performed will not void any warranty’s available to your telecommunications infrastructure. Specifically, the US Communications M.A.C. Team provides services in the following areas:

- Structured cabling
- Data networking
- Paging & Sound
- Telephony
- Video
- Fiber optic cabling
- Security
- Consulting
- Design / installation
- Ongoing maintenance



## M.A.C. Team Attention to Detail



From the M.A.C. Team’s arrival in well-maintained cargo vans to the final clean-up, the M.A.C. Team technician will exude professionalism while in your work environment. This attention to detail is oftentimes commented on by our many repeat clients and is something that we are most proud of. With an average employment tenure of eight years, M.A.C. Team Members are excellent ambassadors of the entire US Communications and Electric family.

## The M.A.C. Team is Here to Assist

We look forward to discussing your next telecommunications project with you.

**Rob Anguish**  
(216) 478-0810 x128  
RAnguish@uscande.com

**Jean Spackman**  
(216) 478-0810 x130  
JSpackman@uscande.com

(216) 478-0810

@USCommElec

FBE / DBE / EDGE

www.uscande.com

***Your right choice for voice, data, video, security, and sound.***